

## There are 3 ways to make it easier to access dashboards

1. Make CSSW dashboards a favourite in the browser
2. Create a desktop link
3. Create an App

Please choose whichever method you prefer (you don't need to do all 3).

The first 2 will allow you to view the CSSW dashboards in the Edge internet browser.

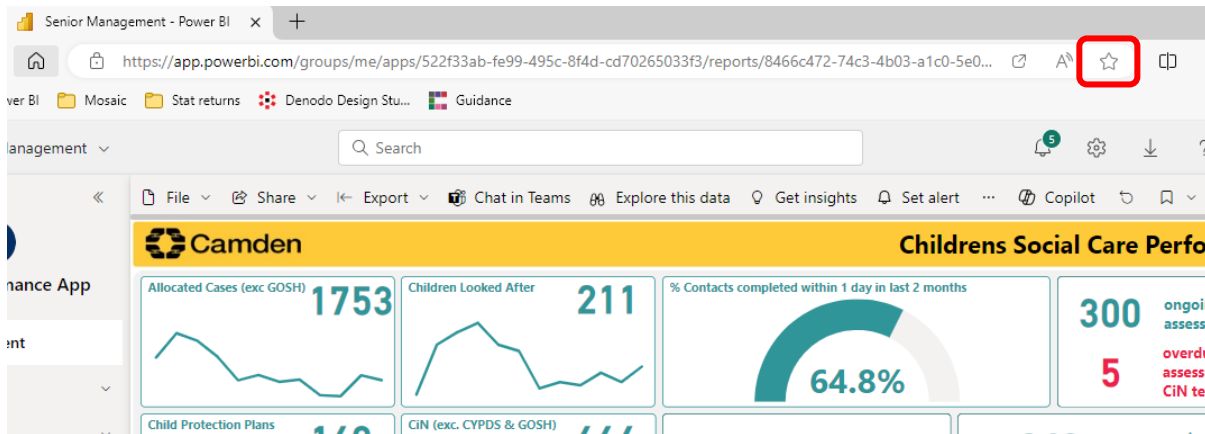
The 3<sup>rd</sup> method creates an App

Details on how to do this are explained below.

### 1: How to make CSSW dashboards a favourite in the browser

Open Edge and navigate to the dashboards using the [Power Bi link](#)

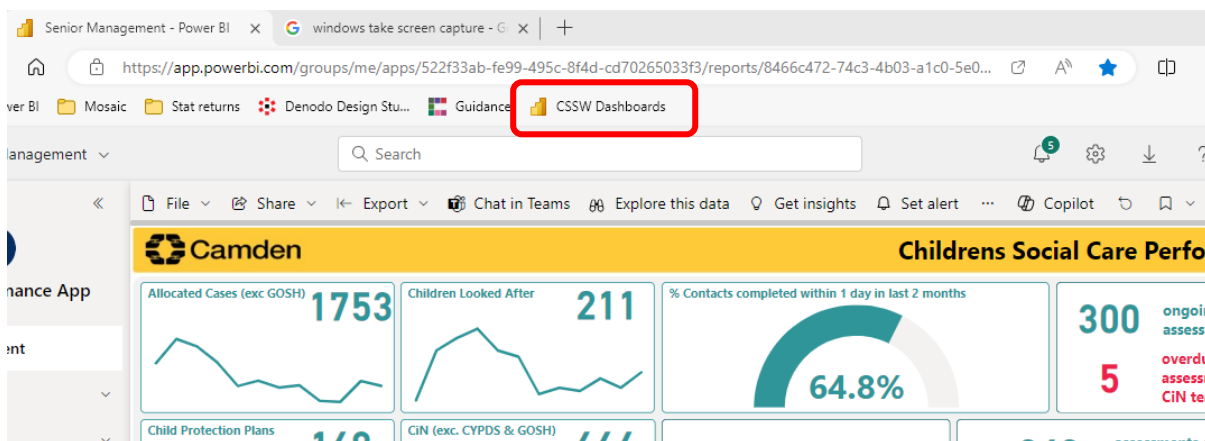
Click on the STAR icon



When the popup window appears:

- Enter CSSW Dashboards for **Name**
- Select 'Favourites bar' from the **Folder** dropdown list.
- Click **Done**

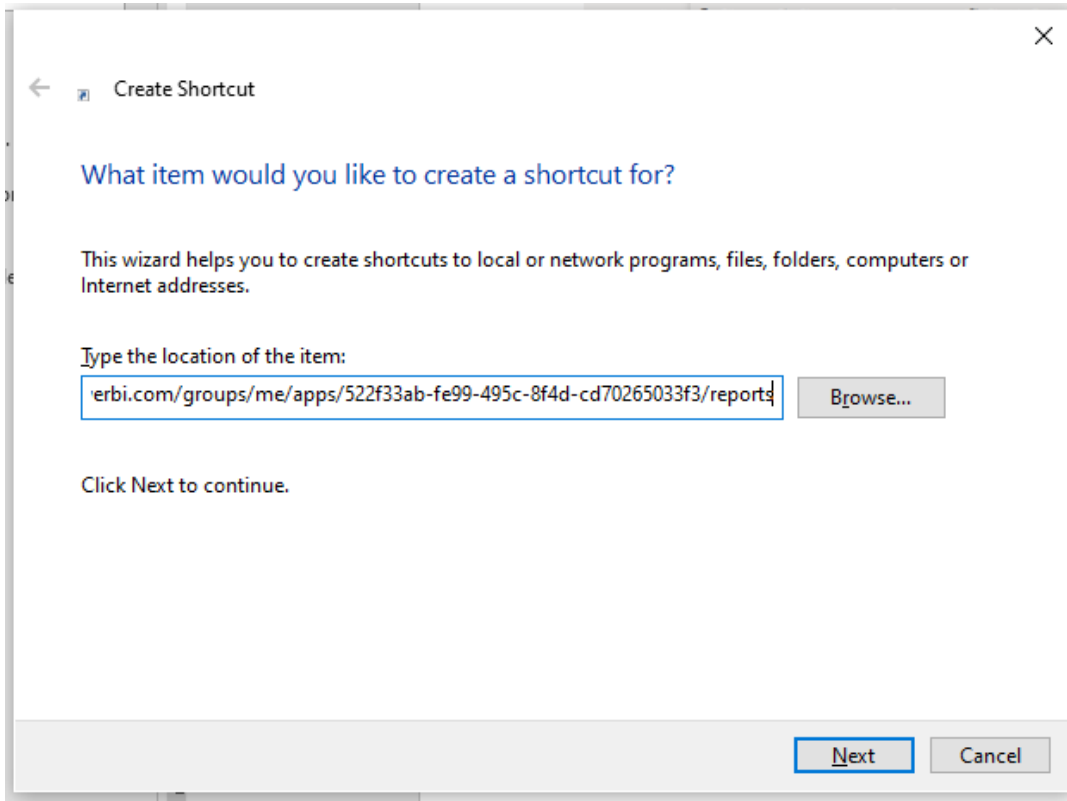
You now have a favourite button that you can use to take you directly to the dashboards



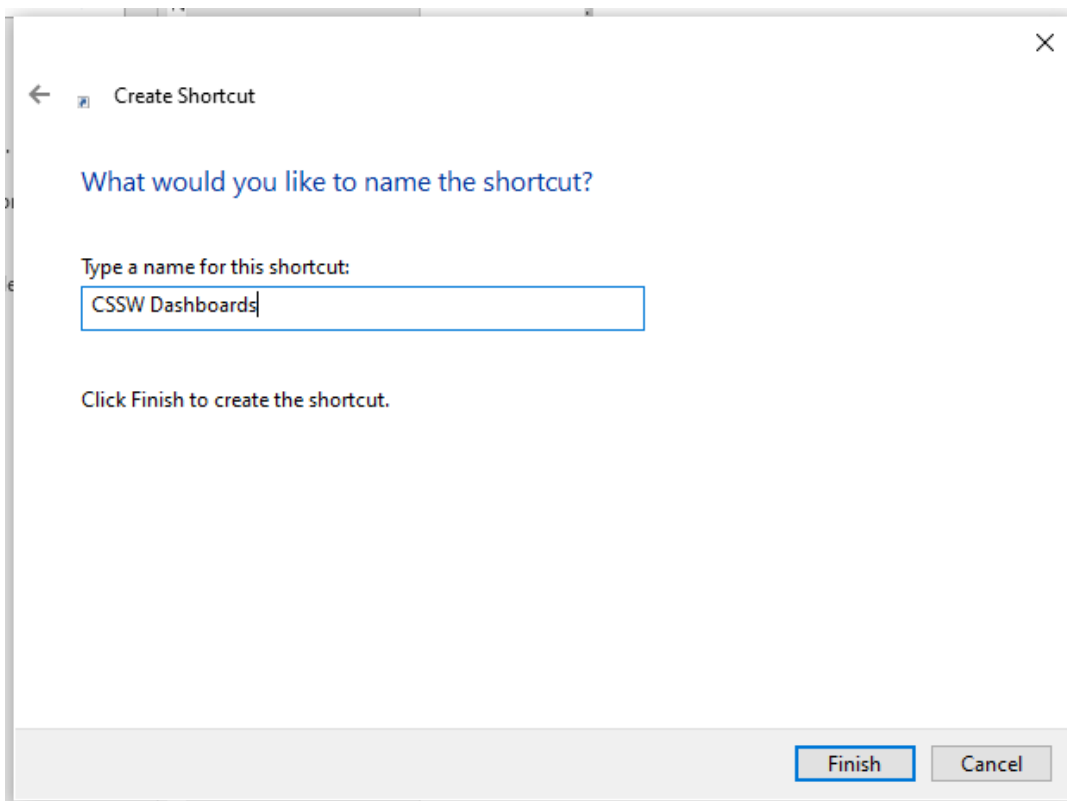
## 2: How to create a desktop link

Right-click anywhere on your desktop

In the window that appears paste the following link <https://app.powerbi.com/groups/me/apps/522f33ab-fe99-495c-8f4d-cd70265033f3/reports> and click **Next**



Enter a name for the shortcut



Click **Finish** and you will now have a desktop icon called 'CSSW Dashboards' that you can use to launch the dashboards within the Edge browser.

### 3: How to create an App

Open Edge and navigate to the dashboards using the [Power Bi link](#)

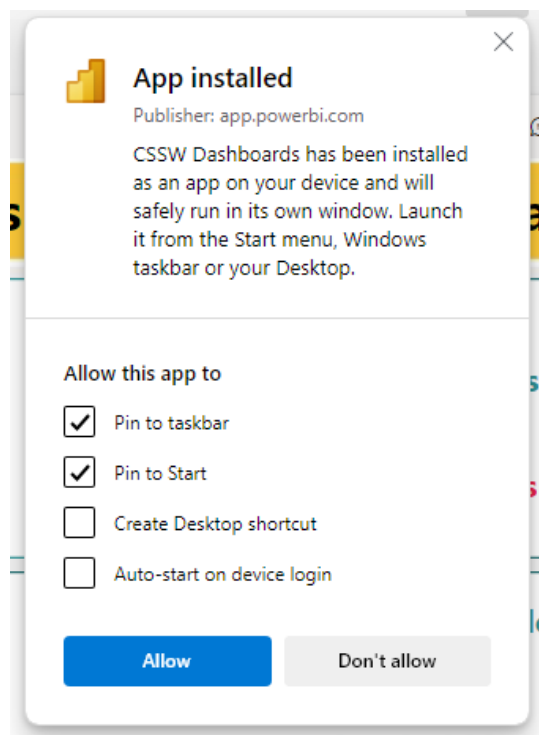
Click the 3 dots in the top-right of the browser

Select **Apps** from menu

Select **Install this site as an app** from the sub-menu

Enter **CSSW Dashboards** for the app name and click Install

Choose whether to create an icon for the app on the taskbar / start menu / desktop. Click **Allow**.



You can now launch the CSSW dashboards from the resulting icons.