



## Information for Unaccompanied Asylum-Seeking Children (UASC)

# Health map

Central and North West London NHS Foundation Trust  
**SHN**

If you are an Unaccompanied Asylum-Seeking Child (UASC) or have lived outside of the UK for a longer period of time, we want to ensure that you have the same health opportunities and services as anyone born and raised in the UK.

### Initial health Assessment (IHA)

You will be seen by a Children Looked After Specialist Doctor, Nurse, and a CAMHS practitioner at the Crowndale Children's Services Clinic. They will help you to make a plan for your health and wellbeing based on your needs and preferences. This includes addressing the following:

#### Physical health

- ▶ **GP registration**  
Everyone needs a GP local to their home address.
- ▶ **Dentist**  
All children in the UK are recommended to have a check up with a Dentist on a 6-12 monthly basis.
- ▶ **Optician**  
All children in the UK are recommended to have annual or biannual vision checks.

#### ▶ Immunisation

All children in the UK are offered immunisation to be protected against preventable infectious diseases. If you do not have any documentation of previous immunisation, you are recommended to get catch-up vaccinations following the Public Health England guidelines. You will need 3 visits, each with a gap of 4 weeks and you will be given 6 vaccines in total. You may also be recommended further vaccination depending on your needs. Vaccines are important to protect you, your community and your future family. You will need to book the appointments with your GP/Practice nurse.

#### ▶ Audiology

You will be offered a hearing test due to a high risk of exposure to head trauma, infections and/or loud noises during your asylum journey. If there are any concerns, we will recommend you to be referred to a specialist audiology service.

#### ▶ Infectious disease screen

You will be offered Tuberculosis and infectious disease screening due to a higher risk of exposure to infectious diseases in your home country or on your journey.

You will receive an appointment letter in the post. If you do not hear from the hospital within 3 months, please contact Jackie Touray on **0203 447 7876** or [jackie.touray@nhs.net](mailto:jackie.touray@nhs.net).

#### Sexual health

##### ▶ Sexual health clinic

You will be offered an appointment at the specialist UASC sexual health clinic in Archway. This is because you may not have had any sexual health and relationship education, and it is important that you are aware of sex and the law in the UK, and the services available to you, such as screening, contraception and advice.

#### Emotional Health

##### ▶ CAMHS

You may have been through a difficult journey to the UK. At your initial health assessment, you will not be asked to tell your story or share anything you don't want to. You will be asked questions to understand how your mental health is affecting you now (e.g. regarding sleep, diet, worries etc), and how we can support you. If you want to, you can be referred to 1-1 therapy. You are free to change your mind at any time and you can speak to your social worker or keyworker about this.

#### Review health assessment (RHA)

This health assessment in your home or in the clinic by a Child Looked After Specialist Nurse. We will review the plan made at your initial health assessment, and help you to make a new plan.



This document is also available in other languages, large print, Braille, and audio format upon request. Please email [communications.cnw1@nhs.net](mailto:communications.cnw1@nhs.net)

**Arabic**  
 هذه الوثيقة متاحة أيضًا بلغة كبيرة الحجم وطباعة صوتية وبتصميم صيغة  
 الارتفاع. يرجى إرسال طلبك بالبريد الإلكتروني إلى [communications.cnw1@nhs.net](mailto:communications.cnw1@nhs.net)

**Farsi**  
 این سند را می‌توان به صورت بزرگ و با فونت بزرگ و به صورت صوتی و به صورت  
 نقطه در دسترس. لطفاً درخواست خود را به آدرس ایمیل [communications.cnw1@nhs.net](mailto:communications.cnw1@nhs.net)

**Bengali**  
 এই ডকুমেন্ট অন্য ভাষায়, বড় ফন্টে আকারে, বড় বড় আকারে এবং বড় বড়  
 আকারে পাওয়া যায়।

**Somali**  
 Dokumentiigaan waxaa xitaa lagu heii karaa luqado kale, daabacad far waa-wayn,  
 farta indhoohaha (Braille) iyo hab dhegaysi ah markii la soo codsado.

**Portuguese**  
 Mediante solicitação, este documento encontra-se também disponível noutras  
 línguas, num formato de impressão maior, em Braille e em áudio.

**Tamil**  
 இந்த ஆவணம் வேறு மொழிகளிலும், பெரிய  
 எழுத்துக்களில், பெரிய அட்டை அளவில், பெரிய அட்டை அளவில்  
 கிடைக்கிறது.

**Spanish**  
 Este documento también está disponible y puede solicitarse en otros idiomas,  
 letra grande, braille y formato de audio.

**Polish**  
 Dokument ten jest na życzenie udostępniany także w innych wersjach języko-  
 wych, w dużym druku, w alfabetcie Braille'a lub w formacie audio.

**Gujarati**  
 આ દસ્તાવેજ વિવિધ ભાષાઓમાં, મોટા અક્ષરોમાં, બ્રેલમાં  
 અથવા અવાજના સ્વરૂપમાં ઉપલબ્ધ છે.

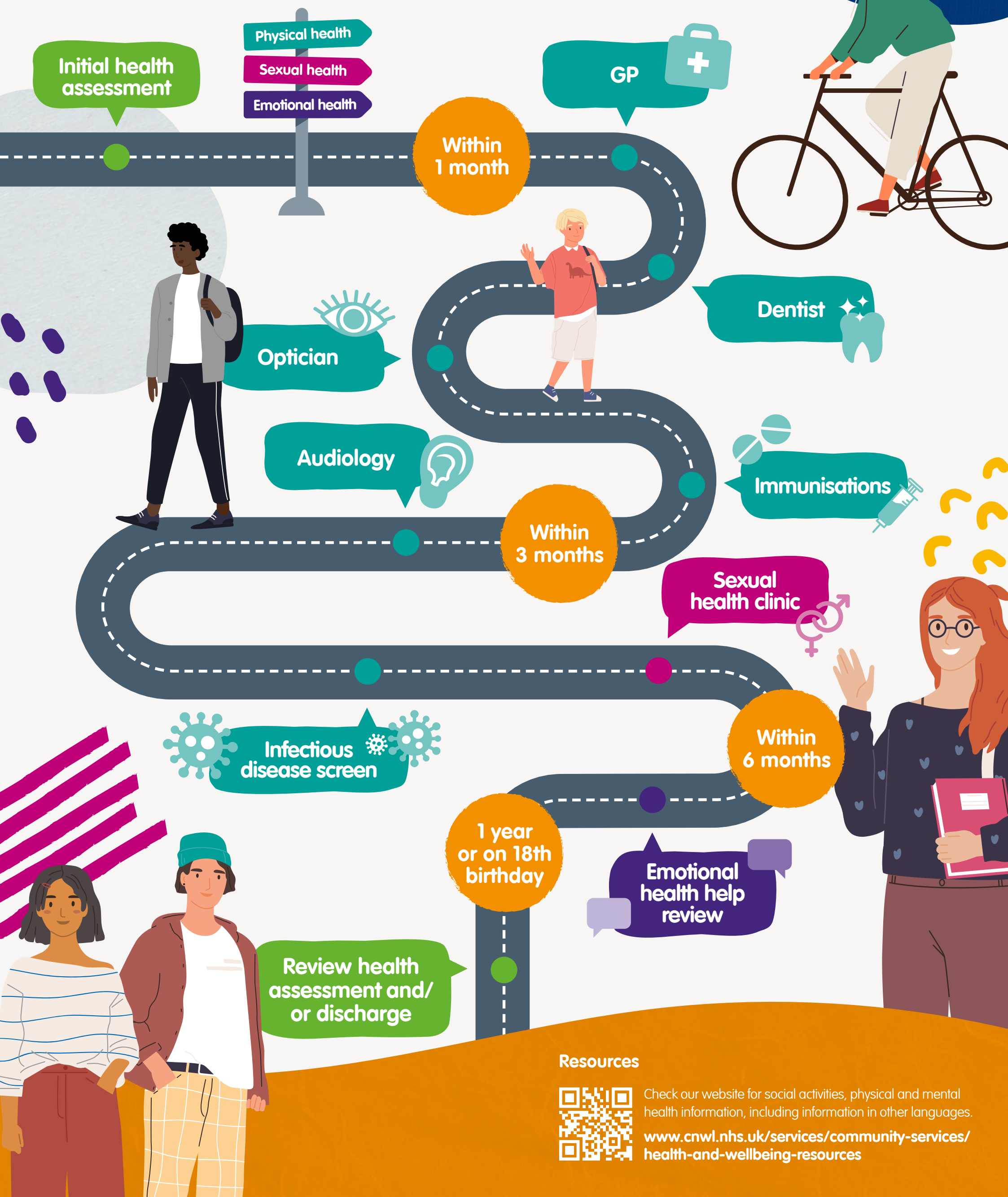
**Turkish**  
 Bu belge istenirse, başka dillerde, irt harflerde, Braille ile (görme engelliler için) ve  
 ses kasetinde de temin edilebilir.

# UASC Health Map

This map will show you the health opportunities and services available to you within the first year of arrival. This covers physical, sexual and emotional health.



Central and North West London  
NHS Foundation Trust



## Resources



Check our website for social activities, physical and mental health information, including information in other languages.  
[www.cnwl.nhs.uk/services/community-services/health-and-wellbeing-resources](http://www.cnwl.nhs.uk/services/community-services/health-and-wellbeing-resources)