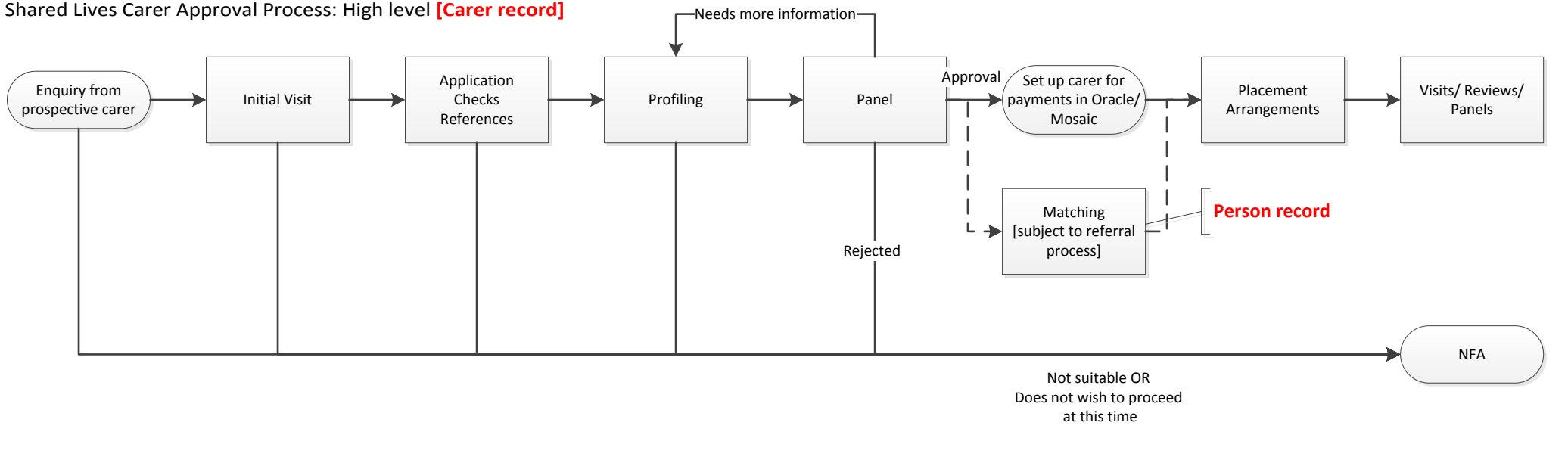
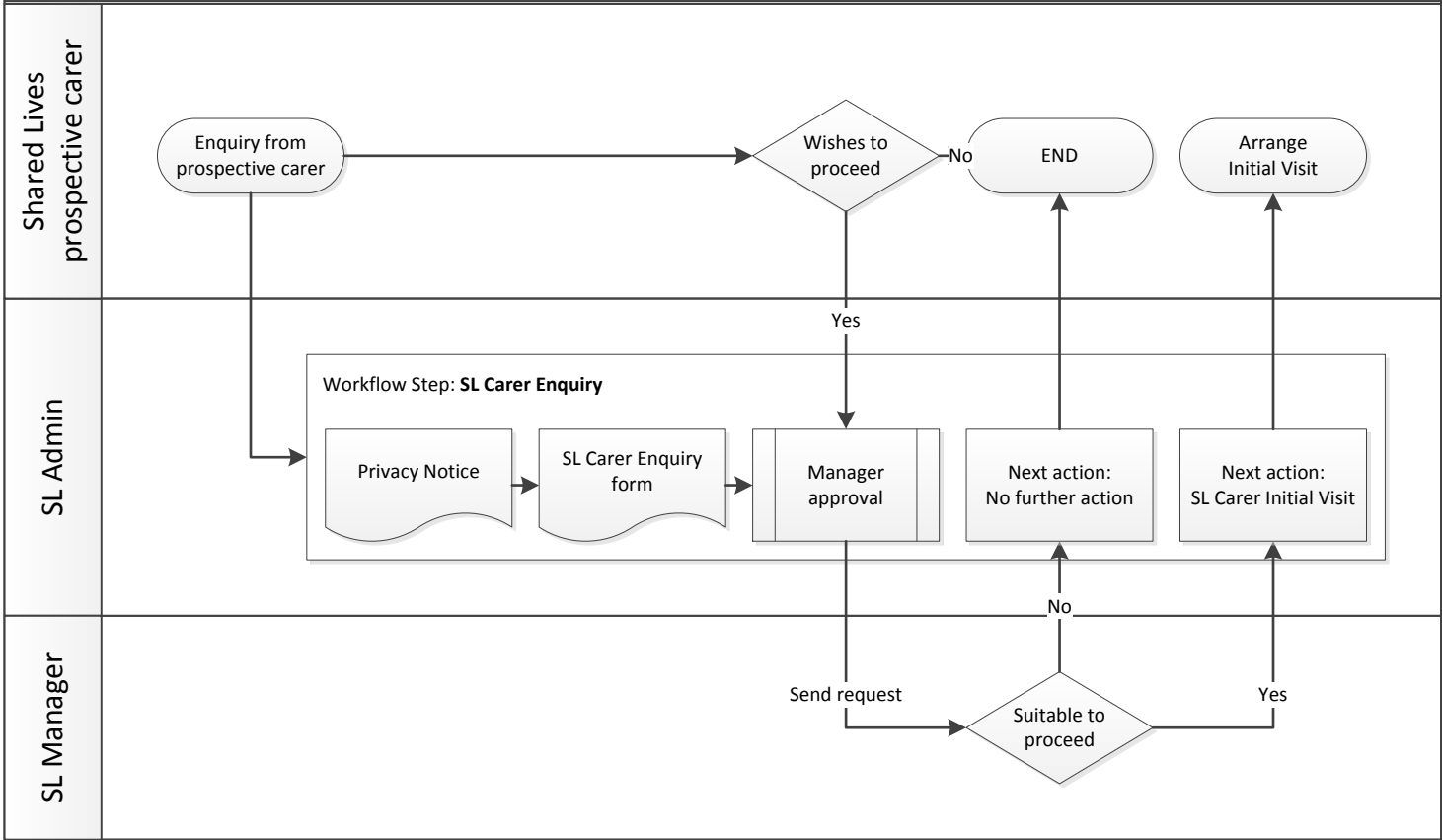


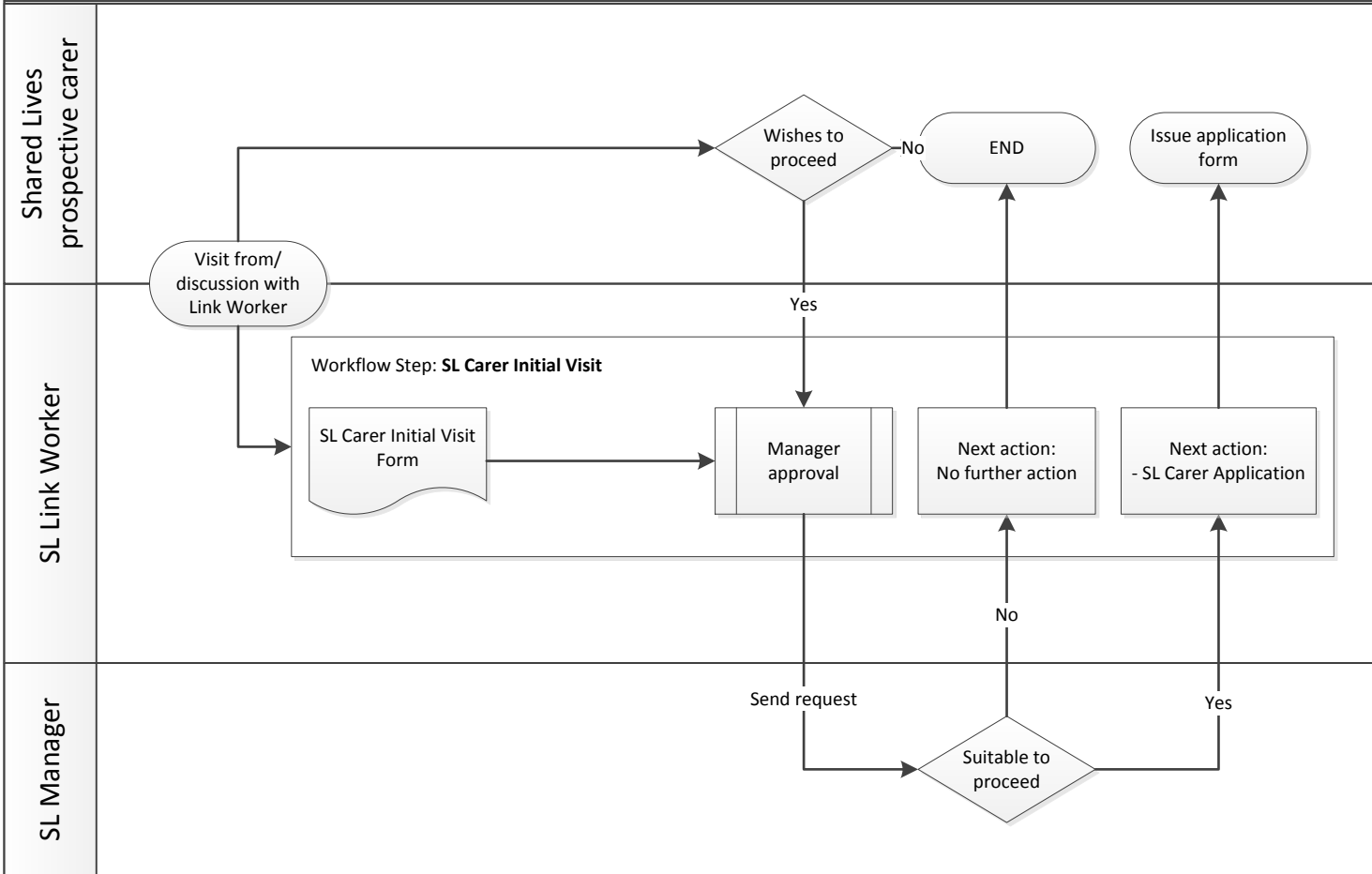
Shared Lives Carer Approval Process: High level [Carer record]



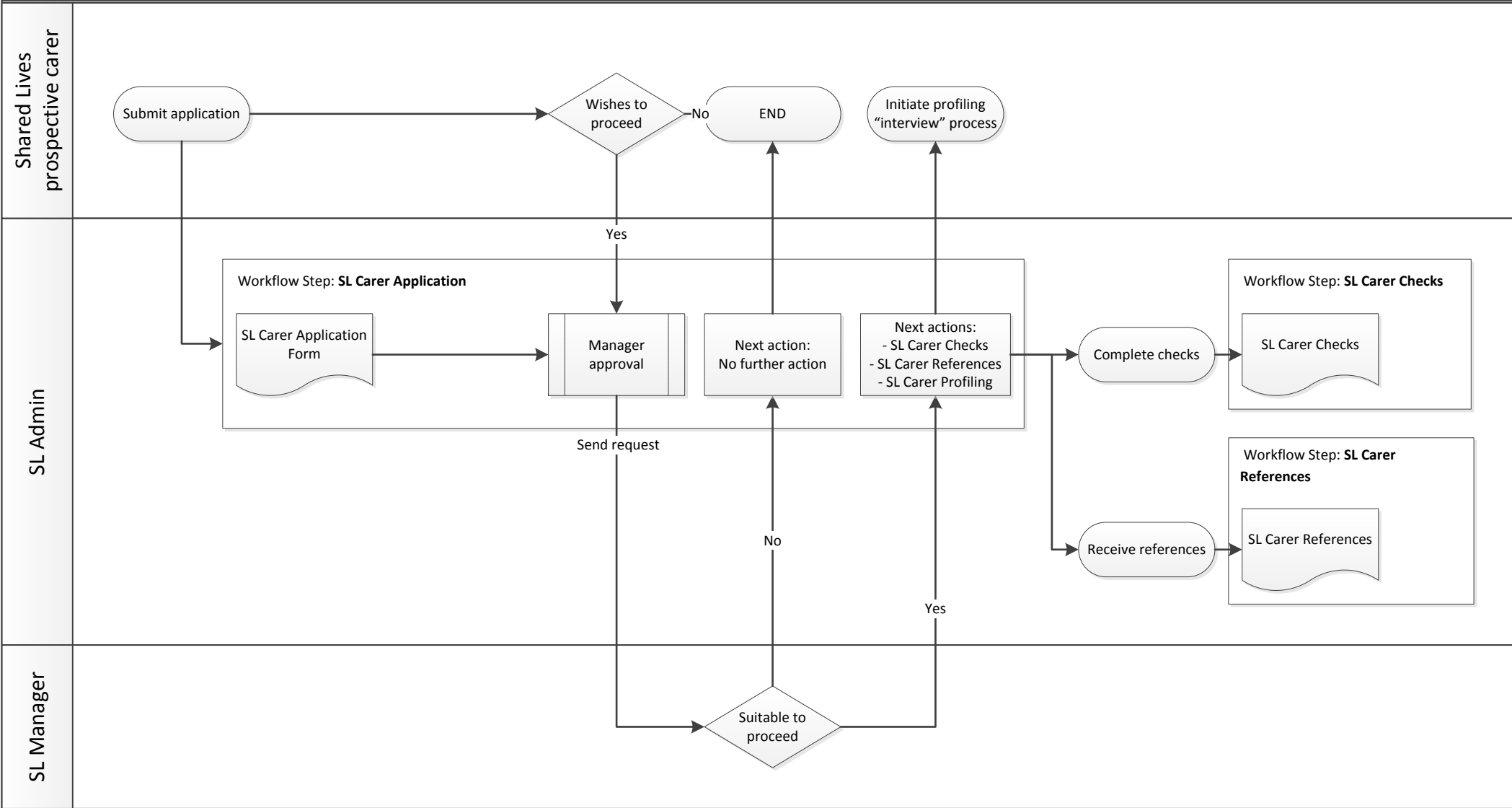
Shared Lives Mosaic process: Enquiry



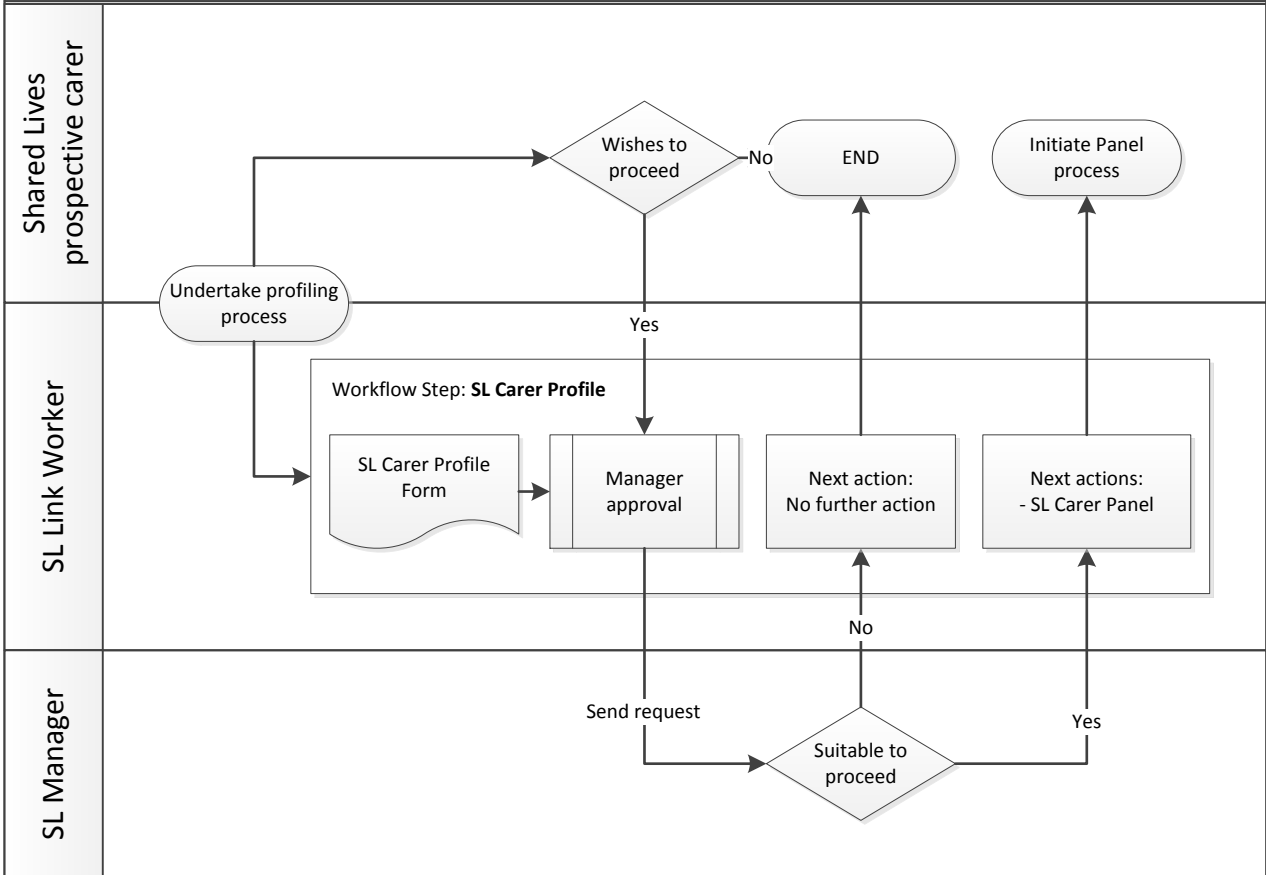
Shared Lives Mosaic process: Initial Visit



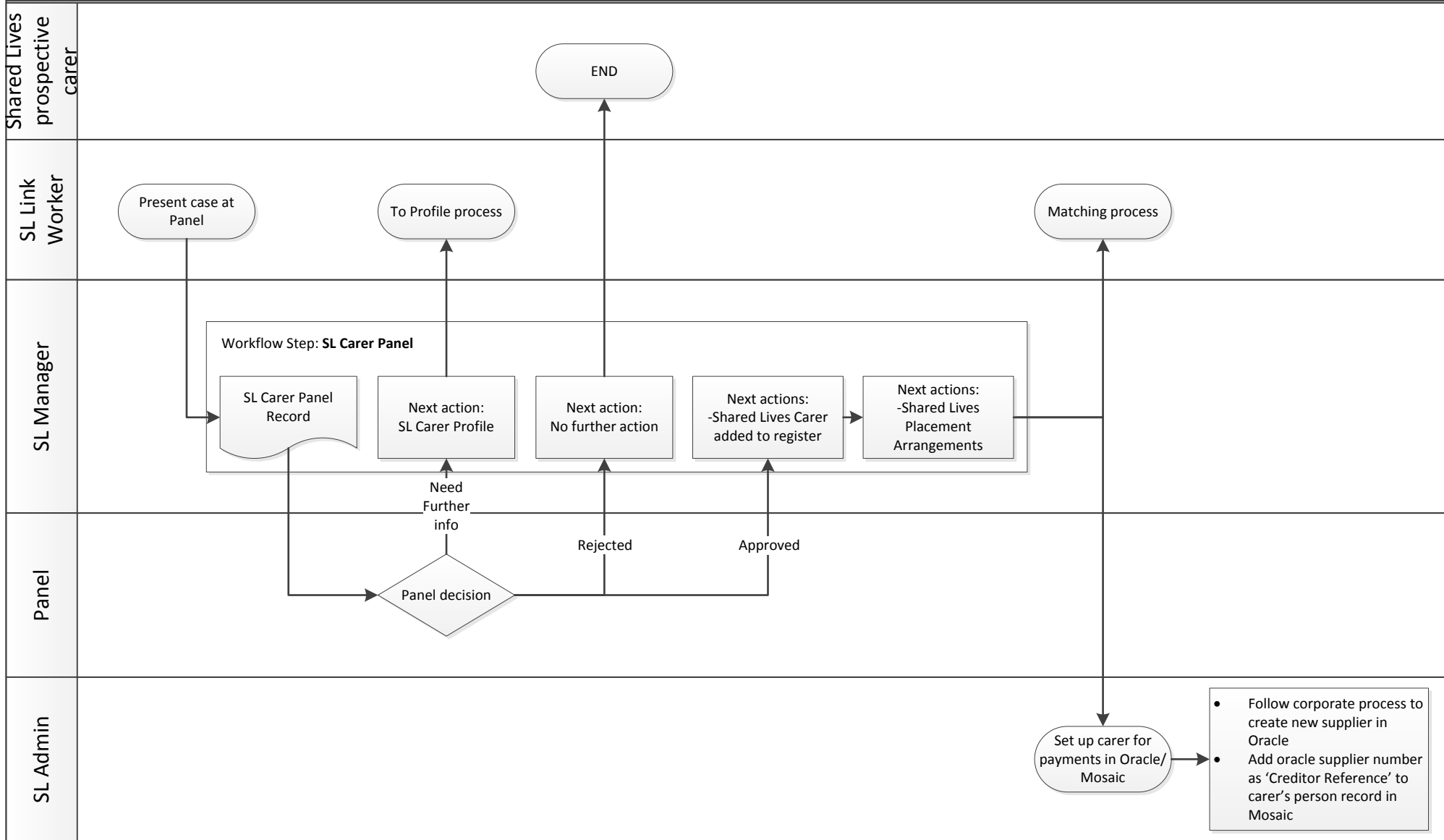
Shared Lives Mosaic process: **Application**



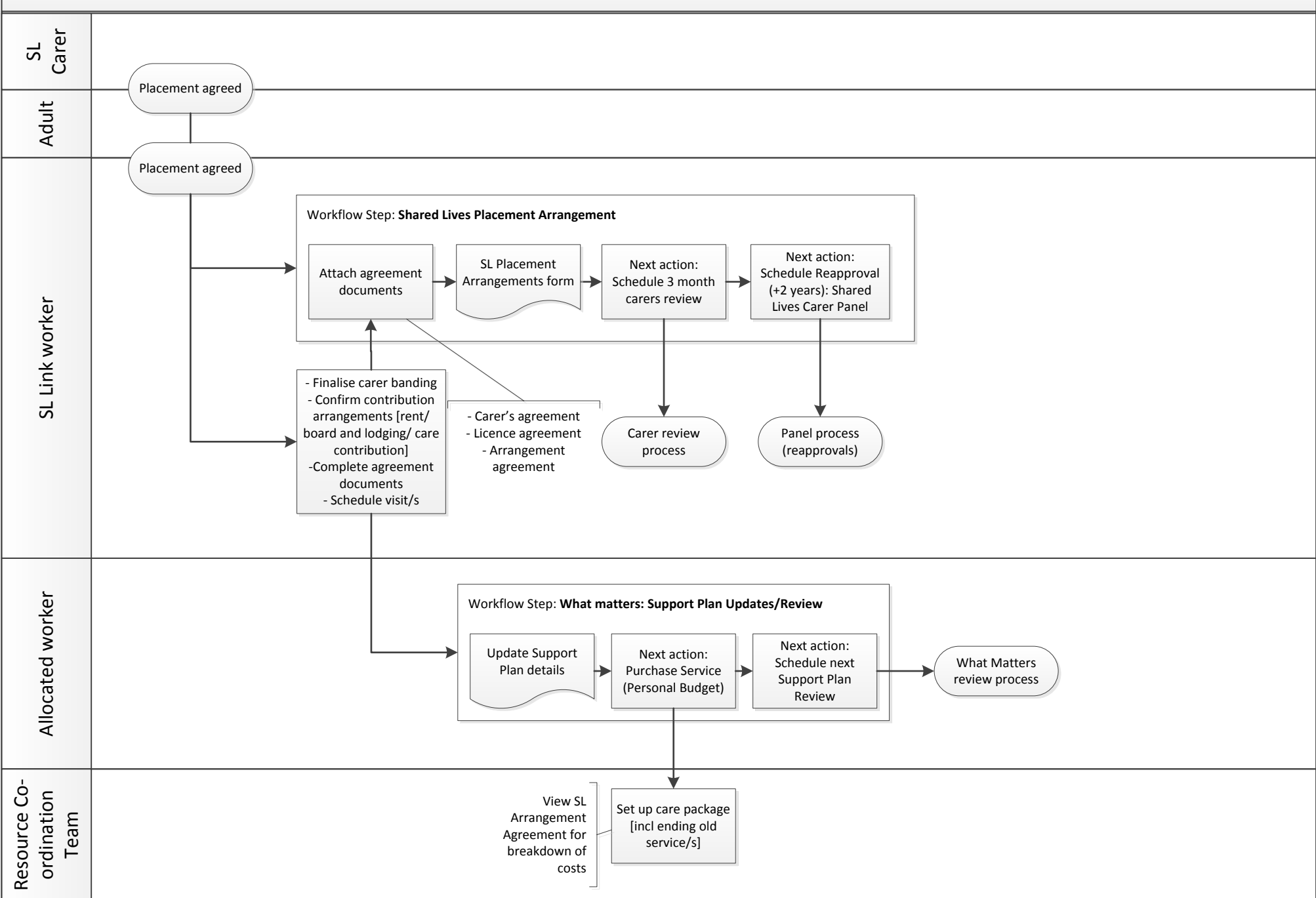
Shared Lives Mosaic process: Profiling



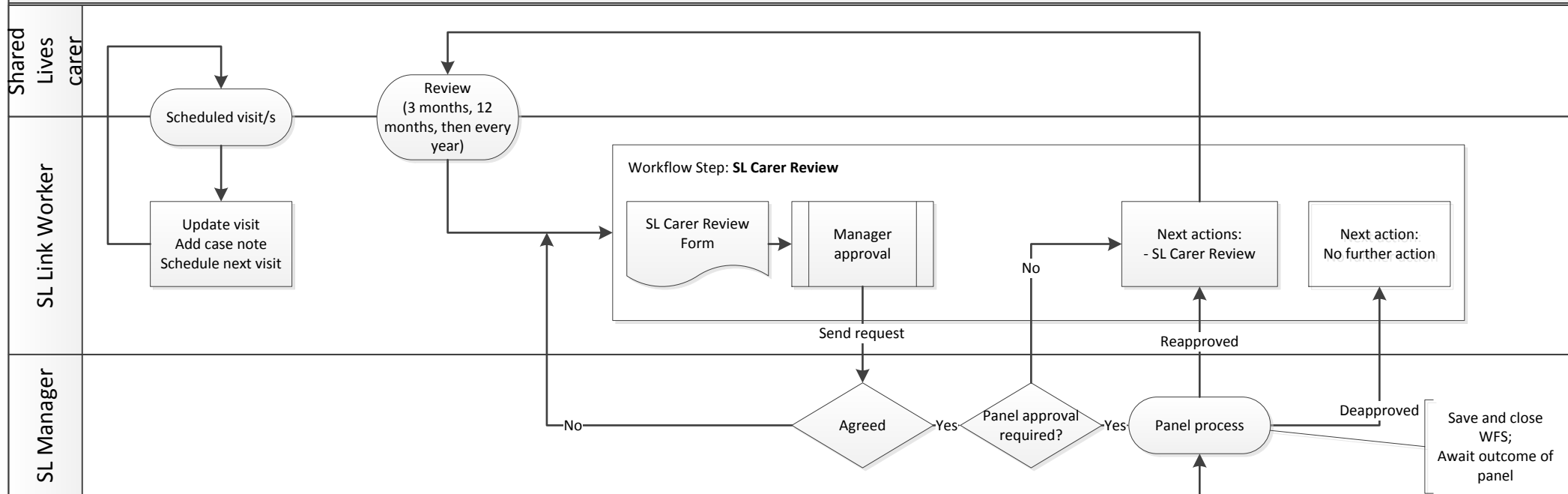
Shared Lives Mosaic process: Panel



Shared Lives Mosaic process: **Placement Arrangement**



Shared Lives Mosaic process: Review and Panel process



Shared Lives Mosaic process: Panel (reapprovals): 12 months, 3 years, then every 3 years

